

BLUE HORIZON SCHOOLS

PROSPECTUS
2025/2026



BLUE HORIZONS SCHOOLS



MISSION

- To develop the knowledge base and character traits of pupils so as to inspire them to become highly competent and responsible personalities in the future.
- To instil and ignite the passion for lifelong learning, self-awareness, critical thinking and prepare them for a brighter future.



VISION

"To be a choice destination for learning where all pupils are encouraged to develop their optimal potential through the provision of high-quality education and character development schemes in a safe and inclusive environment where talents, creativity and innovation are nurtured".



HISTORY

Blue Horizon Schools (BHS) is a new cosmopolitan school established in 2024 and duly registered under the Companies and Allied Matters Act (CAMA) 1990 with Corporate Affairs Commission. It sits on approximately 30 acres of land in Millennium City (one of the largest private schools in Northern Nigeria). The location is quite unique because of the serenity of the environment, easy accessibility, spacious and secure facilities in the fastest-growing urban part of Kaduna Metropolis. Our environment provides vast play and sports grounds where children can explore their physical talents thereby discouraging them from the addictions of the digital world.

BHS is a co-education school and utilises the Nigerian Education Curriculum with a touch of the British Curriculum. As part of our desire to give equal opportunity to all children, our facilities are accessible to children with special needs. This is consistent with the school's desire to promote equity, diversity and inclusion in all ramifications.



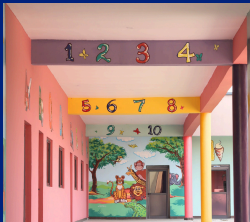
EARLY YEARS

We understand that early childhood is a crucial stage, and we focus on nurturing children's social and emotional needs in a secure and friendly environment. Our education is tailored to each child, balancing child-initiated play with teacher-led activities. The early years curriculum spans academics, arts, physical, and social development, designed to help children explore and discover their talents. We encourage curiosity, confidence, and openness to new ideas. By fostering these skills, we aim to build a strong foundation for lifelong learning and a smooth transition to primary school.





EARLY YEARS PLAYGROUND



PRIMARY SECTION

The school is compartmentalised in separate blocks (Lower Primary Block & Upper Primary Block) with separate play areas to ensure interactions between similar age groups only. Our Primary School Curriculum is fully Nigerian with a blend of British Curriculum in the core subject areas: Mathematics, English, Reading, Spelling, Handwriting, Science and Technology, Geography, History, Music, Art, Physical Education and Sports.







PRIMARY PLAYGROUND

Secondary





JUNIOR SECONDARY SCHOOL

At BHS, we recognise the importance of laying a solid foundation in the first 3 years of secondary school. We strive to establish a love for learning, study skills, good habits and creativity of thoughts. Lessons are therefore purposeful with lots of practicals in order to create interest and make learning easier for our pupils. All the pupils in JSS undertake all the subject listed in the curriculum and are taught by specialist teachers for each subject.

The JSS is equally a friendly and nurturing environment that is highly conducive for learning. Each class has a designated Form Tutor that meets with the class at least once each day and with individual pupil as necessary. The Form Tutor along with the specialist counselors provide guidance to the pupils on all aspects of school life. They are also available to give feedback to parents on the conduct and progress of their children.

All JSS students are given equal opportunities in sporting and club activities. These activities provide an avenue for the pupils to know each other and also build their character traits and leadership skills.



SENIOR SECONDARY SCHOOL

The SSS curriculum is designed to offer a broad academic grounding in order to maximise subject options for the pupils in their final year. Pupils are encouraged to think and express their opinions independently. We strive to develop their critical thinking skills and sharpen their analytical minds in preparation for university education. At the beginning of SSS1, pupils are categorised into 3 groups – Science, Arts and Commercial.

Our teaching methodology is anchored on cognitive and psychomotor development to give our learners the best form of education with world class standard. This is complemented by audio-visual aids such as interactive boards, laboratory practicals, field visits, excursions etc.





BEYOND TRADITIONAL ACADEMICS





EXTRACURRICULAR CLUBS

At Blue Horizon Schools, our clubs are designed to complement classroom learning and foster a wide range of skills. Students can choose from the following

- **Culinary and Craft Club (Home Makers Club):** Students learn to prepare a variety of local and international dishes, pastries, and explore the importance of healthy eating and home management.
- **Jets Club:** A science and technology-focused club aimed at fostering a deeper understanding of science. Students are exposed to current trends and innovations in science and technology.
- **ICT and Robotics Club:** Through coding and programming robots, students gain hands-on experience with technology, acquiring valuable skills for the future in a fun and engaging way.
- **Arts/Music Club:** This club opens students up to the world of music, dance, drawing, painting, modelling, crafts, and drama, providing a creative outlet and nurturing artistic talents.
- **Chess Club:** Teaches chess strategies and critical thinking, improving students' problem-solving skills and preparing them for local and national tournaments.
- **Spelling Bee Club:** Enhances students' vocabulary, language comprehension, and public speaking skills, with a focus on preparing for local and national spelling competitions.

CO-CURRICULAR ISLAMIYYA

At Blue Horizon Schools, our Islamiyya Program is designed to provide students with a strong foundation in Islamic knowledge and values, complementing their academic education. The program is integrated into the school curriculum and offers comprehensive learning in key Islamic disciplines:



ARABIA

Introduction to the Arabic language, focusing on reading, writing, and speaking, enabling students to understand Islamic texts.

TAJWEED

Teaching the correct pronunciation and recitation of the Qur'an with emphasis on proper articulation and fluency.

FIQH

Understanding Islamic jurisprudence, focusing on the principles and laws governing day-to-day life as a practicing Muslim.

TAWHEED

Learning about the oneness of Allah, the core concept of Islamic belief, and its importance in the life of a Muslim.

SIRAT

The study of the life and teachings of Prophet Muhammad (PBUH), helping students learn valuable lessons in moral conduct and leadership.

QUR'AN

Memorization and study of the Qur'an, ensuring students develop a deep connection with the Holy Book through guided memorization sessions.

SPORTS AT BHS

“

There is a saying, "All work and no play makes Jack a dull boy." We understand the importance of sports in promoting integration and culture, and have left no stone unturned. Our school features standard football and handball, pitches, as well as basketball, volleyball, and badminton courts. Pupils are encouraged to engage in multiple sporting activities.

”



SPORTS AT
BHS



OUR SCHOOL AT A GLANCE

30

ARCE CAMPUS



02

FOOTBALL FIELDS



05

ICT SUITES



05

SCIENCE LABORATORIES



BASKETBALL BADMITON &
VOLLEYBALL COURT



SCHOOL FACILITIES

SCIENCE LABORATORIES



BIOLOGY



PHYSICS



BASIC
SCIENCE



CHEMISTRY

SCHOOL FACILITIES

ROBOTICS LABORATORY



SCHOOL FACILITIES

HOME ECONOMICS / FOOD & NUTRITION LABORATORY



SCHOOL FACILITIES

TECHNICAL DRAWING STUDIO



SCHOOL FACILITIES

LIBRARY

Our modern double volume library is a well-equipped learning space stocked with a wide range of books suitable for all ages and levels. It features serene reading areas and dedicated sections for Primary, and Secondary students.

The library supports both academic learning and personal growth, fostering a love for reading and independent study. It has a growing collection of fiction, non-fiction, academic texts, and reference books.



SCHOOL FACILITIES

ART STUDIO



SCHOOL FACILITIES

SCHOOL CLINIC



At Blue Horizon Schools, the well-being of our students is a top priority. Our school nurse is a retired pediatric professional with over 20 years of experience in child healthcare. Her extensive expertise ensures that every child is cared for with compassion and precision, creating a safe and nurturing environment for learning and growth.

SCHOOL FACILITIES

UNITY CIRCLE



Our Unity Circle serves as a vibrant, multi-purpose outdoor space that fosters community and creativity. Designed as a round, open area, it provides the perfect setting for students to enjoy their lunch breaks or participate in unique learning experiences. Teachers often utilise the space for engaging outdoor lessons, such as poetry or storytelling, enhancing the learning process with a fresh and natural environment.



BOARDING FACILITIES

Blue Horizon Schools offers a safe and comfortable hostel accommodation for up to 220 students:



Beryl Hall – Girls' Hostel



Spartan Hall – Boys' Hostel

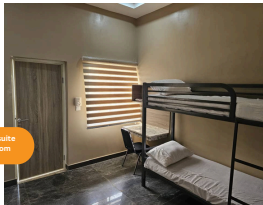
BOARDING FACILITIES



Each en-suite room with 2 double bunk beds is specially designed for 4 students. It has a compartmentalised bathroom (separate shower, toilet, and wash hand basin), thereby achieving comfort and functionality.



En-suite
Room

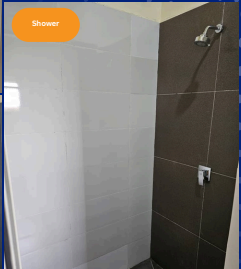




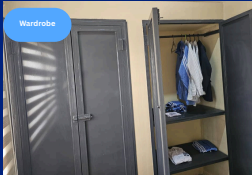
Toilet and
Wash Area



Shower



Wardrobe



BOARDING FACILITIES



Hostel features include:

- A spacious laundry and ironing area
- 24/7 electricity, backed by solar and generator
- Independent Solar-powered water heater in both hostels
- Personal storage/locker space.
- Box room
- CCTV coverage and supported by a professional private security outfit
- Pager facility for quick dissemination of information
- Three boreholes and 32,000 litres water reservoir tank
- Reading table and bookshelf

Each hostel is supervised by a dedicated Hostel Parent, whose room is located within the hostel for round-the-clock guidance and care.



BOARDING FACILITIES



Laundry and Ironing Area



BOARDING FACILITIES



24/7 electricity, backed by solar and generator



Independent Solar-powered water heater in both hostels





ADMISSION PROCESS

01 Eligibility &
Class Openings

02 Collect
Admission Form

03 Complete &
Submit Form

04 Document
Verification

05 Schedule Entrance
Examination

06 Entrance
Examination

07 Receive Results
and Offer

08 Acceptance
of Offer

